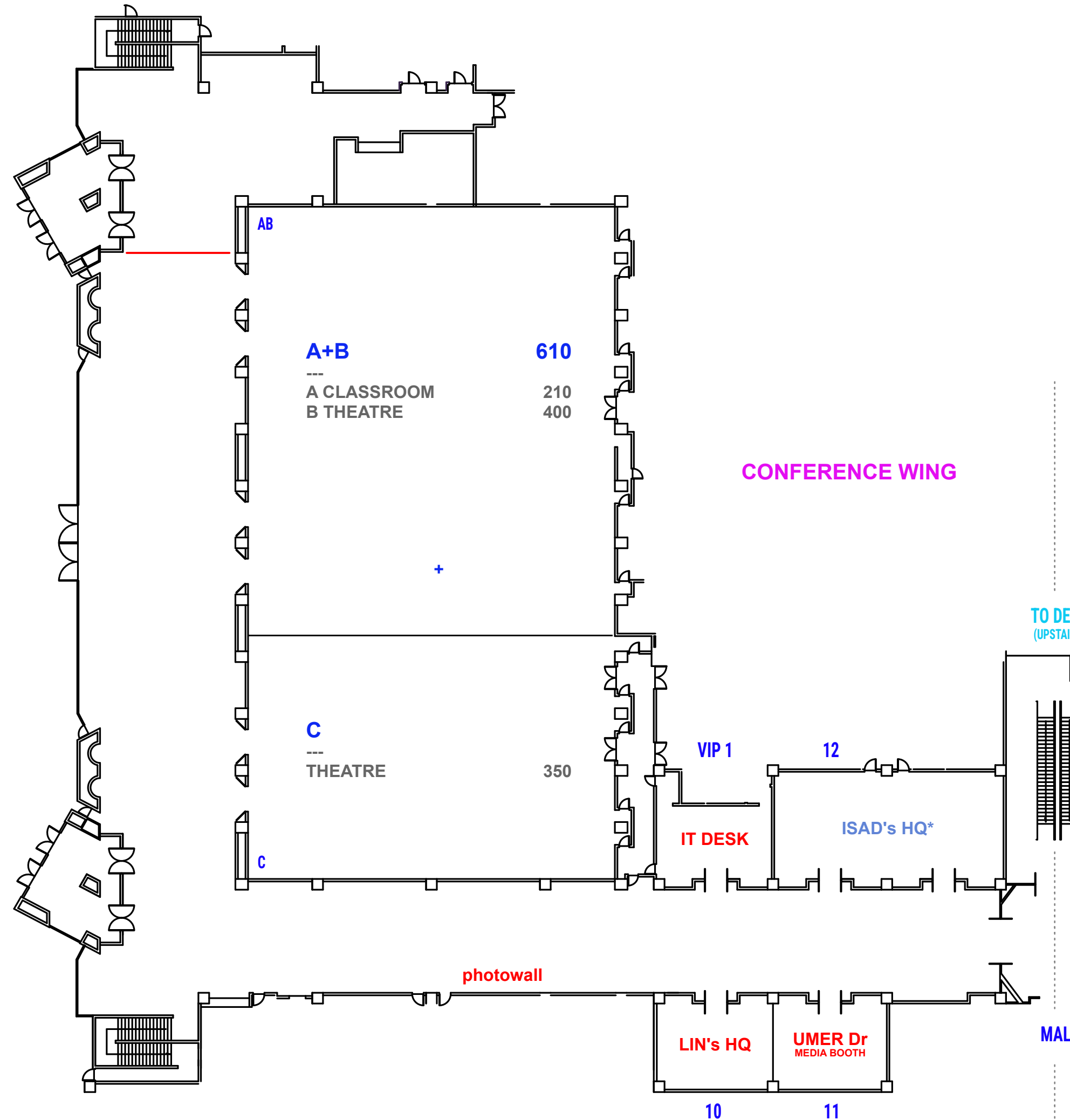
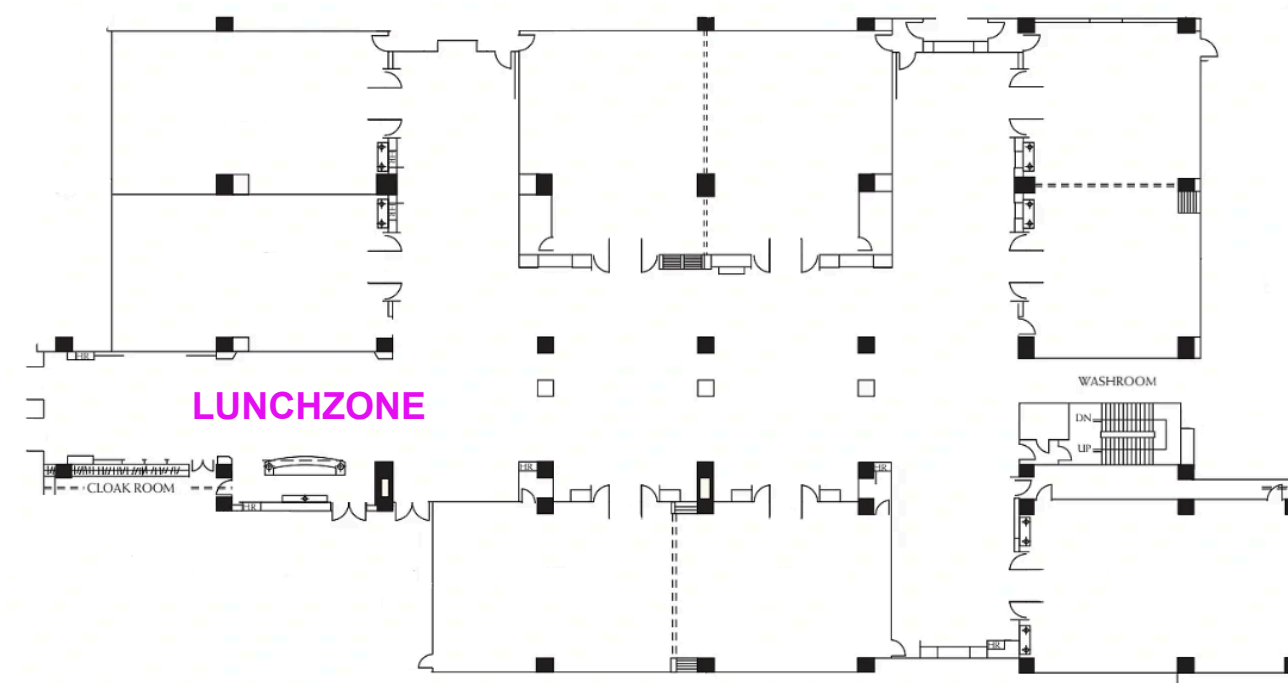


ROOMS & CAPACITIES

AUDITORIUM FLOOR



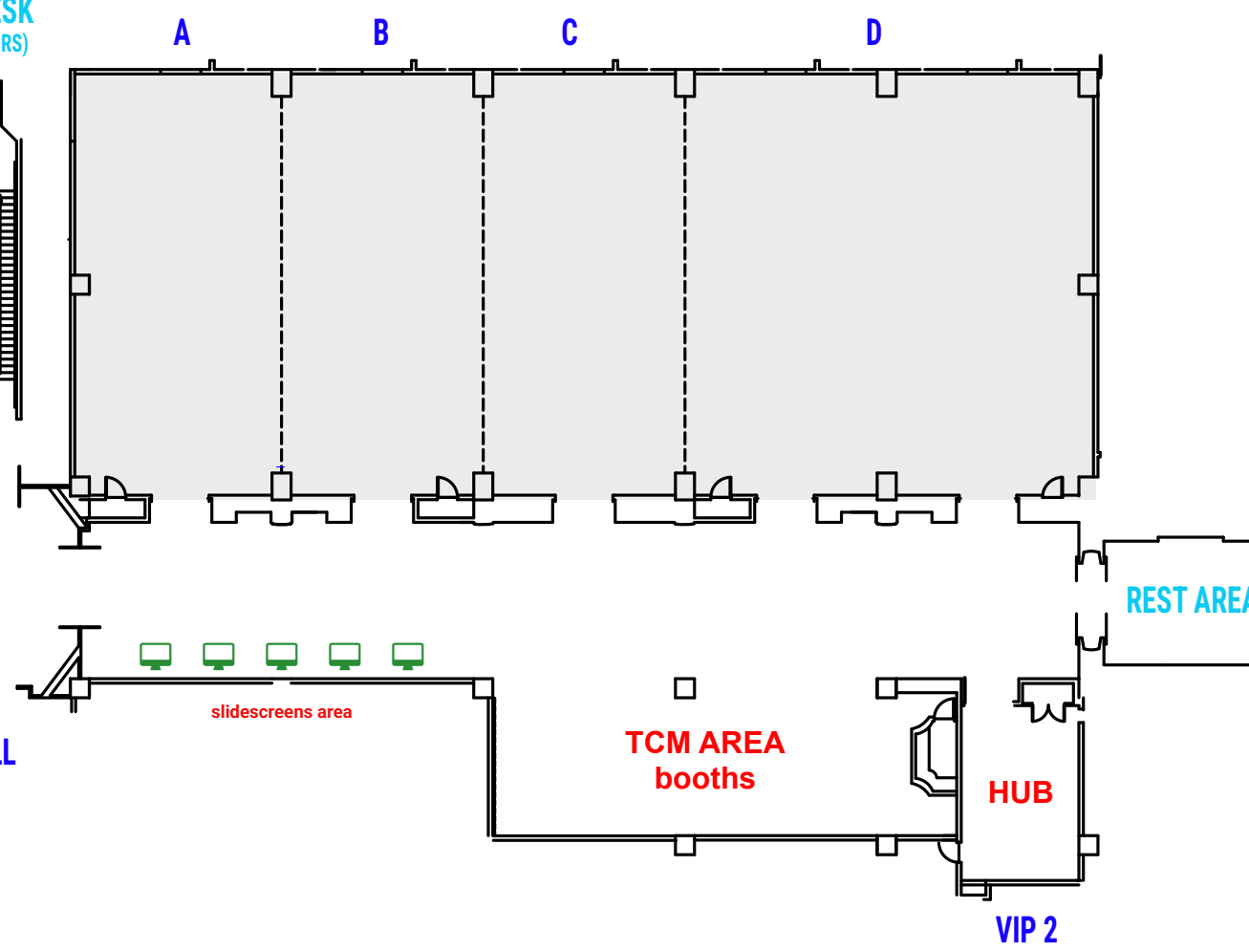
ARCADE FLOOR (B1)



CONFERENCE WING

BALLROOM WING

TO DESK (UPSTAIRS)



BALLROOM WING

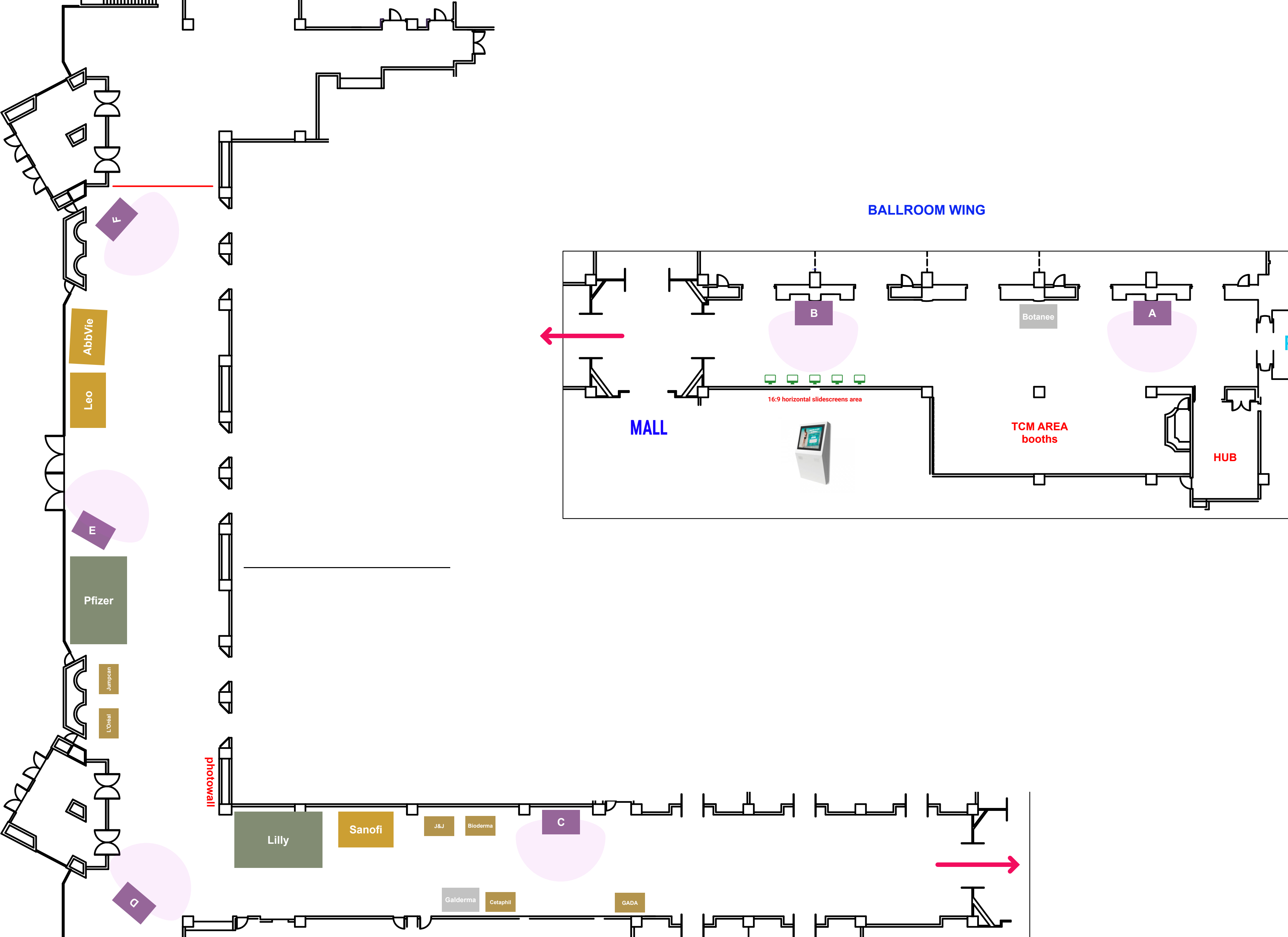
A/B/C

THEATRE	140
RECEPTION	120
BANQUET	80
CLASSROOM	85

D

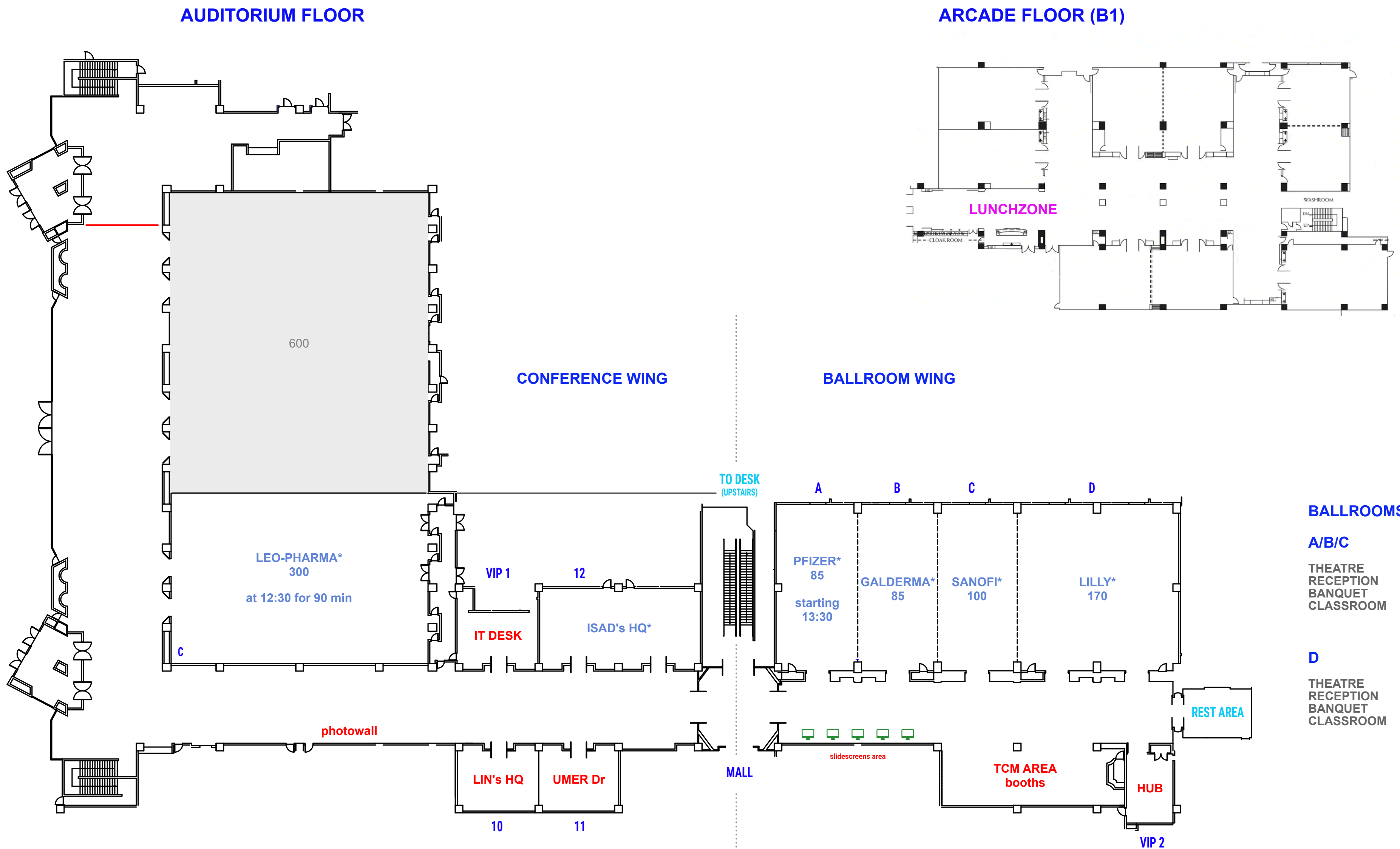
THEATRE	280
RECEPTION	240
BANQUET	170
CLASSROOM	170

EXHIBITION



BOOTHS	m ²	
PLATINUM	32	7.0 × 4.5 m
• Lilly		
• Pfizer		
GOLD	16	4.5 × 3.5 m
• Abbvie		
• Leo		
• Sanofi		
SILVER	6	3.0 × 2.0 m
• Botanee		
• Galderma		
BRONZE	4	2.0 × 2.0 m (1 table)
• Cetaphil China		
• Bioderma China		
• J&J		
• Jumpcan		
• L'Oréal China		
• Viatris China		
• GADA		
• ISAD		

Oct 18th afternoon: 13:45 GLOBAL INDUSTRY WORKSHOPS

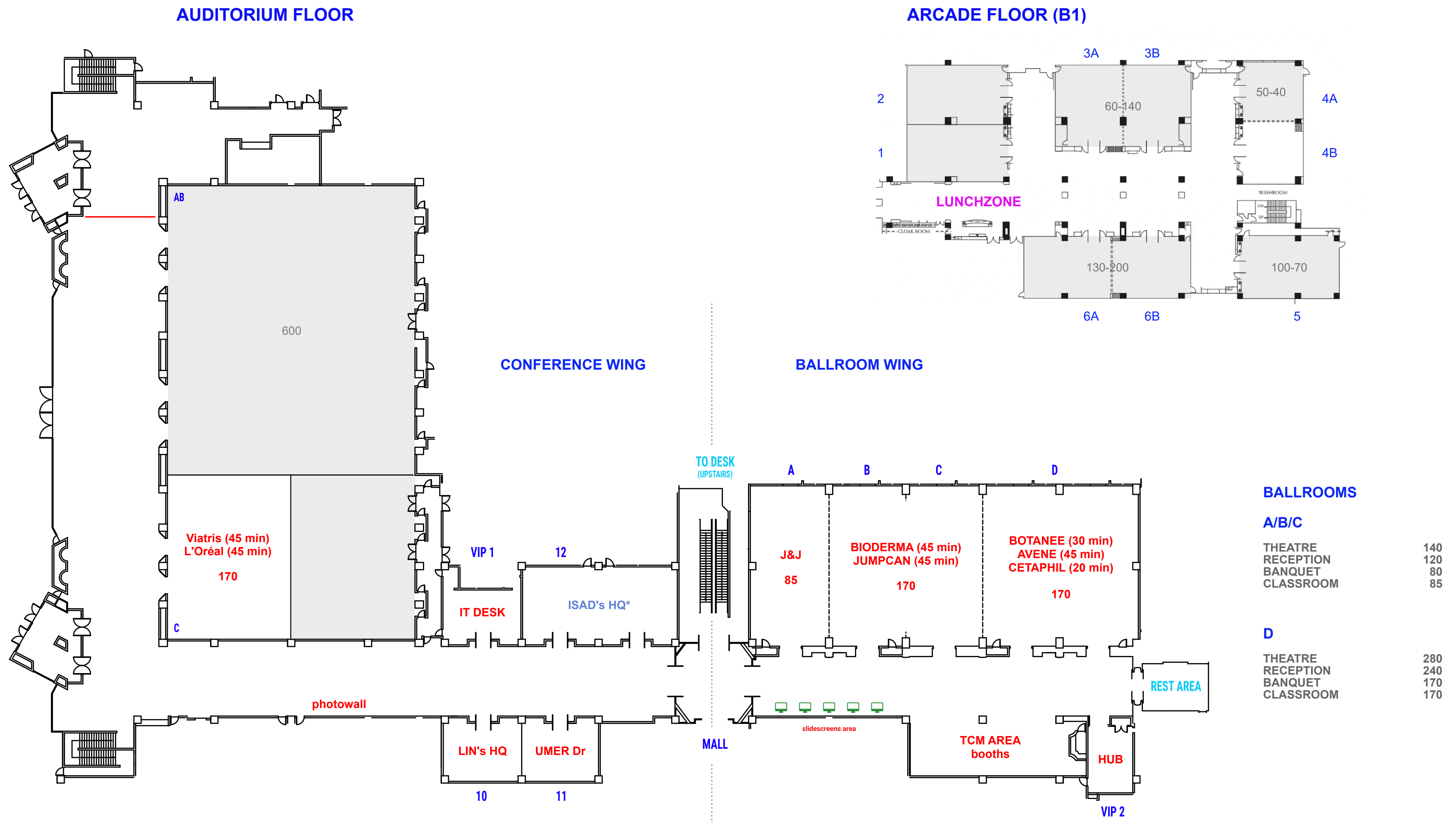


INDUSTRY WORKSHOP		90'
85 pax		
• Pfizer	Ball A	90'
• Galderma	Ball B	90'
• Sanofi (100)	Ball C	90'
170 pax		
• Lilly	Ball D	90'
300 pax		
• Leo-Pharma	Conf C	90'

BALLROOMS

A/B/C	
THEATRE	140
RECEPTION	120
BANQUET	80
CLASSROOM	85
D	
THEATRE	280
RECEPTION	240
BANQUET	170
CLASSROOM	170

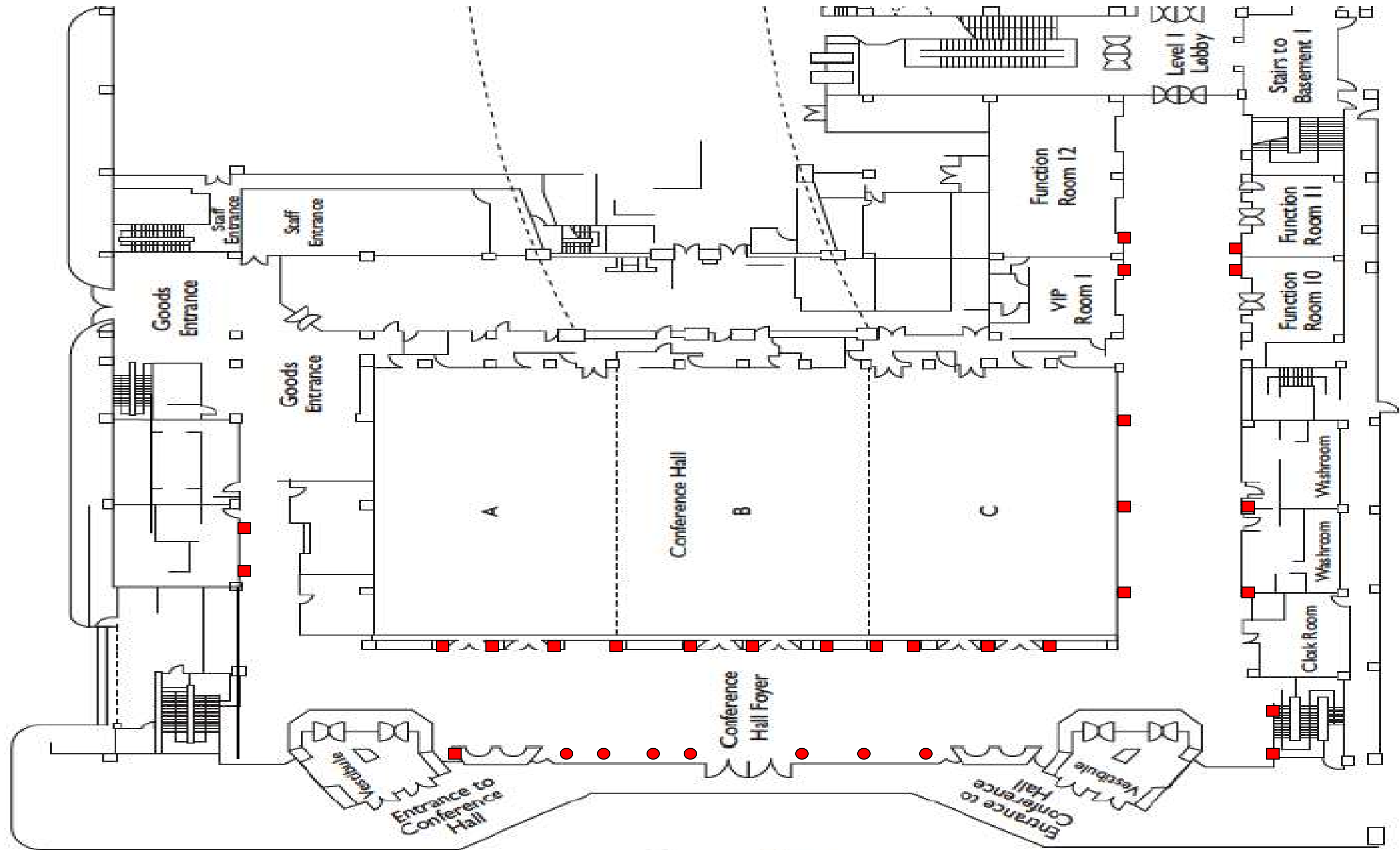
Oct 18th afternoon, 16:30 LOCAL INDUSTRY WORKSHOPS



INDUSTRY WORKSHOP	Room	Capacity
85 pax		90'
• Johnson & Johnson	Ball A	90'
170 pax		
• Botanee	Ball D	30'
• Avene	Ball D	45'
• Cetaphil	Ball D	20'
• Viatris	Conf C	45'
• L'Oréal	Conf C	45'
• Bioderma	Ball B+C	45'
• Jumpcan	Ball B+C	45'

Power Socket Points in Conference Hall Illustration

会议大厅墙插位置示意图



- Power Socket on Wall
- Power Socket on Pillar

Important: Each socket is 220V
Total capacity is 4KW
All sockets are European format

